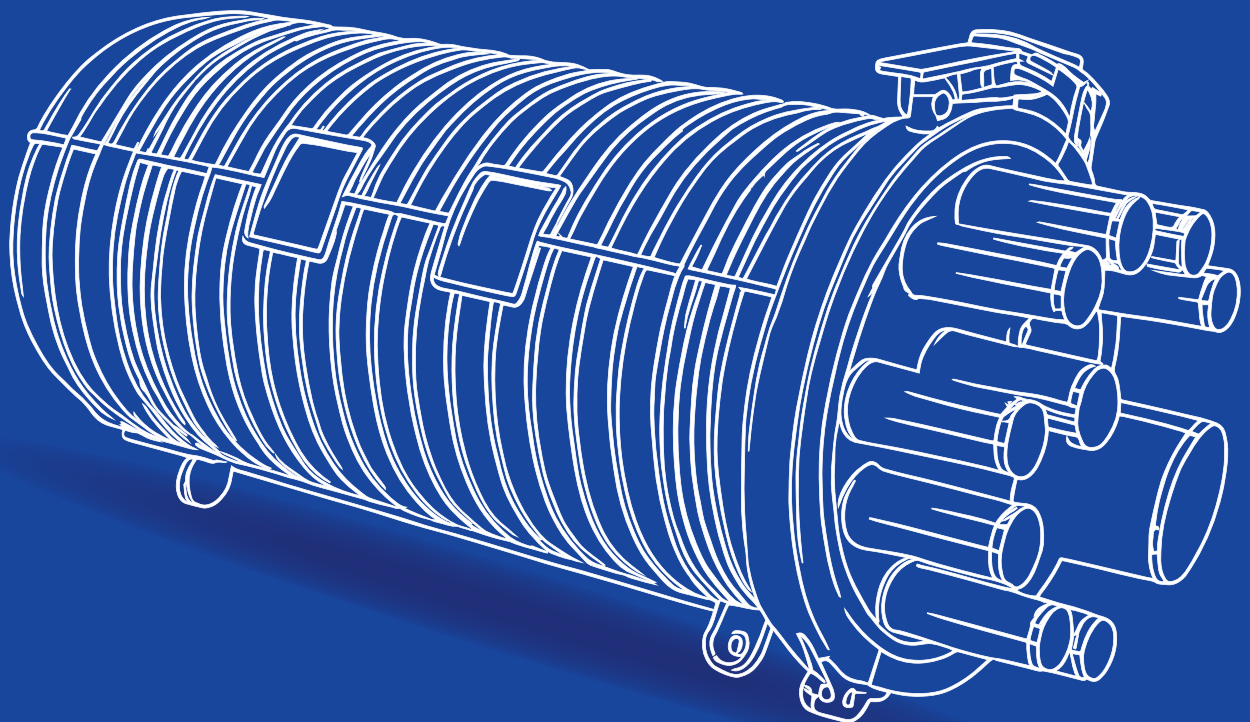


Fibermint



Fibermint will always come up with the cost-effective solutions for our customers



Experience

15^{Year}

Employees

50⁺

Production lines

12^{Lines}

Standard Workshop

5000^{m²}

About Fibermint

Fibermint Telecom Equipment Co., Ltd. is a premier manufacturer specializing in fiber optic splice closures, distribution boxes, and termination boxes. Our expertise lies in delivering high-quality components critical for Optical Distribution Networks (ODN) and Fiber to the Home (FTTH) applications. In addition to our core manufacturing capabilities, we provide tailored OEM and ODM services to meet the unique needs of our global clientele.

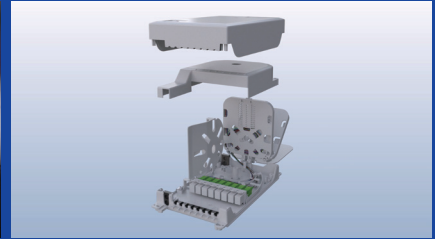
With years of industry experience, Fibermint has significantly expanded its product portfolio while enhancing production efficiency and implementing rigorous quality control systems. Our commitment to excellence ensures reliable, timely delivery of innovative, high-performance products. Through continuous investment in research and development, we stay at the forefront of industry trends, offering cutting-edge solutions to meet evolving market demands.

We take pride in our ability to deliver customized solutions that cater to the specific requirements of our international partners. By aligning our products with the needs of end-users in global markets, we guarantee exceptional customer satisfaction. Fibermint is dedicated to fostering collaborative partnerships with communication equipment suppliers worldwide, driving mutual success through innovation, reliability, and shared growth.



Why Choose Fibermint

R&D Team



With 15 years of growth, Fibermint's dedicated R&D team drives innovation in fiber optic technologies for ODN and FTTH. Our skilled engineers deliver flexible, high-quality solutions tailored to the unique needs of our global partners. This expertise underpins our robust OEM and ODM services, enabling us to design and produce customized products that meet precise specifications.

By staying ahead of industry trends, our R&D team ensures Fibermint delivers innovative, reliable solutions that empower our clients' success.

Our Advantage



Fibermint delivers superior fiber optic solutions through cutting-edge manufacturing. Our advanced injection molding machines and robotic automation ensure precision and efficiency, while our robust management systems drive seamless operations. With tailored OEM and ODM services, we meet diverse global demands, delivering reliable, high-performance products. Partner with Fibermint for innovative solutions and dependable delivery, backed by a customer-centric approach to success.

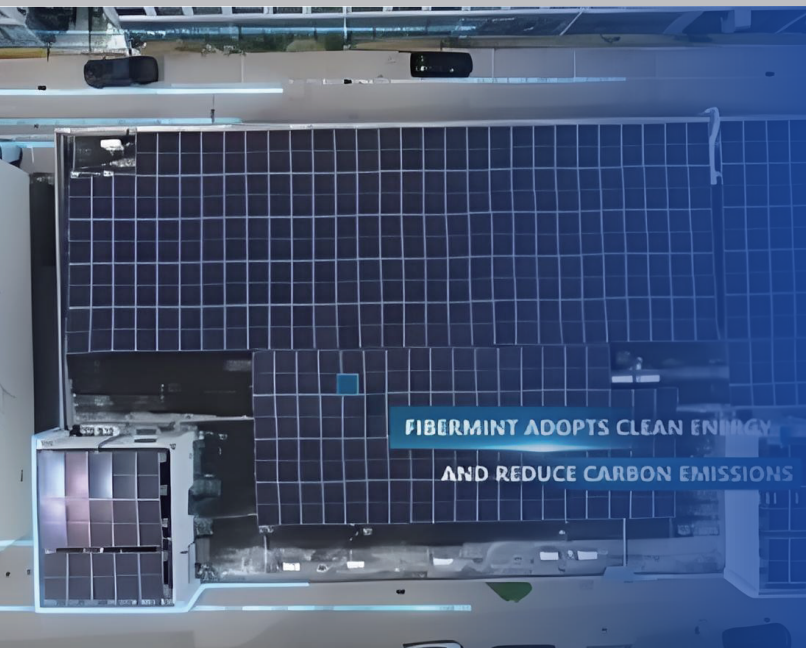


Advanced Assembly Line

Fibermint's state-of-the-art assembly line ensures precision and efficiency in producing fiber optic solutions for ODN and FTTH applications. Equipped with modern technology and rigorous quality controls, our workshop delivers consistent, high-quality products. An air-conditioned environment enhances employee comfort, boosting productivity and precision. Paired with our customer-focused approach, Fibermint's assembly process guarantees reliable, high-performance solutions tailored to global demands.

Quality Control

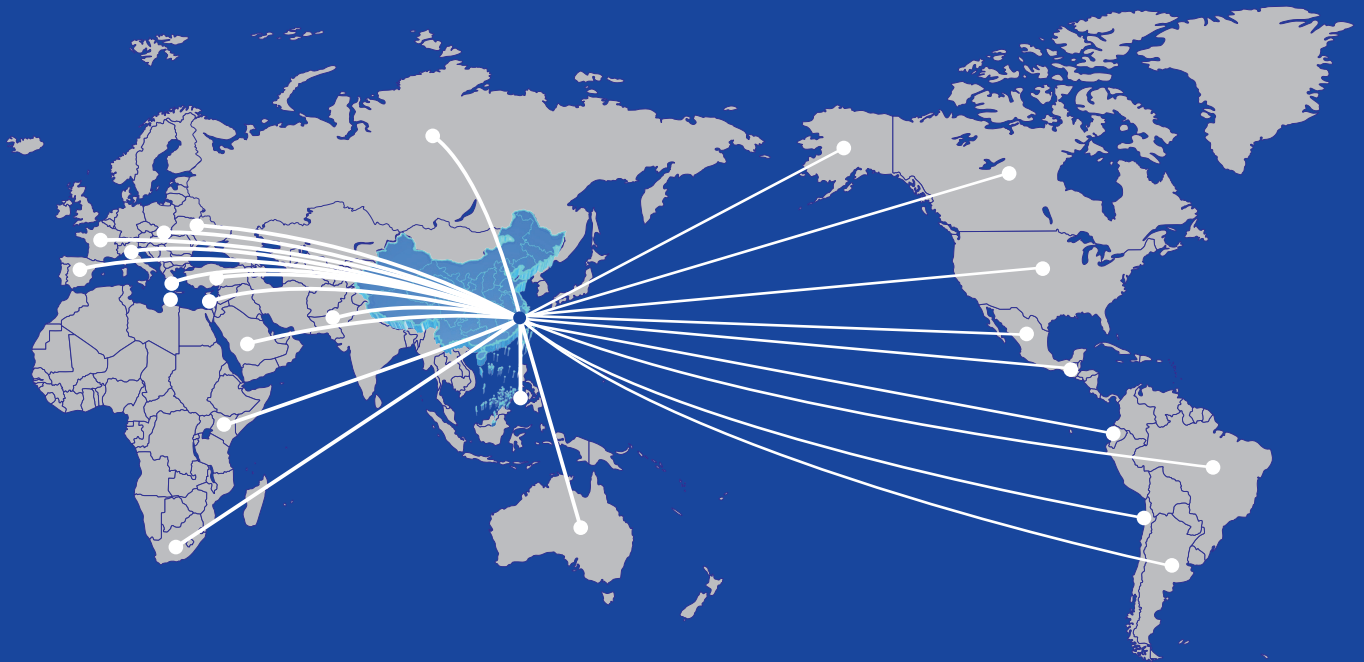
Fibermint upholds the highest standards with ISO 9001 certification, ensuring consistent quality in our fiber optic solutions. Our rigorously trained workforce excels in production and quality inspection, maintaining precision at every step. Equipped with an in-house testing room, we conduct tailored tests to meet client specifications, delivering reliable, high-performance products.



Eco-Friendly Factory

Fibermint is committed to sustainable manufacturing, powering our operations with clean energy. Our factory rooftop is equipped with photovoltaic panels, harnessing solar energy to reduce our environmental footprint. This eco-friendly approach ensures efficient production of fiber optic solutions while prioritizing environmental responsibility.

Sales Network



Milestones

Innovation-Driven Growth · Building the Future

2008

Founded in Hangzhou, Zhejiang, focusing on ODN product R&D

2010

Established in-house injection molding workshop in Yuyao for core component autonomy

2012

Launched 1st-gen fiber splice closure, adopted by domestic telecom operators

2015

Introduced FDB-T224 series; obtained RoHS certification, entering European markets

2018

Expanded production lines, tripling annual output

2021

Relocated to upgraded facility, boosting floor space, workforce, and capacity

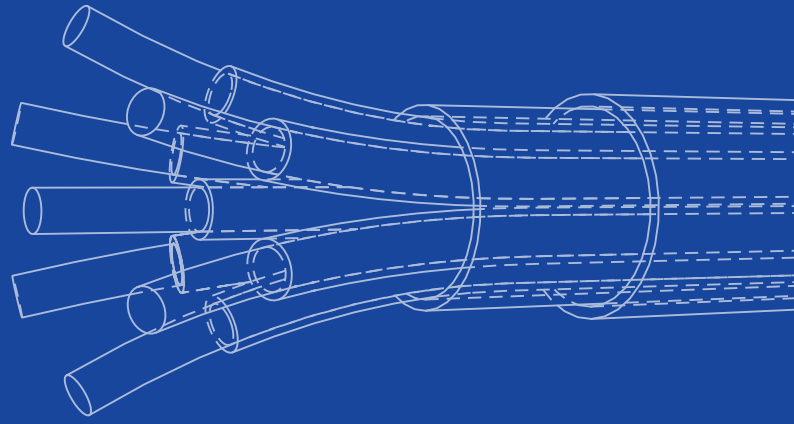
2023

Successfully developed our first gel-sealed fiber closure, enhancing durability in harsh environments

2024

Initiated Green Manufacturing Upgrade with solar power integration, reducing carbon footprint by 25%

CONTENTS



- **Fiber Dome Closure** 01-04
Gel Seal / Mechanical Seal / Heat-shrink Seal Closures
- **Fiber Optic Splice Closure** 05-07
In-line Type and Butt Type Closures
- **Fiber Distribution Box** 08-16
2-144 Cores FDB for both outdoor and indoor application
- **Hardened Terminal Box** 17-20
Adopt hardened connector for fast deployment
- **Fiber Floor Terminal Box** 21-24
Used for distribution or termination on building floors
- **Fiber Wall Outlet** 25-28
Used for end-sures in houses or offices
- **Optical Passive Componets** 29-31
Fiber Adapters & plgtails & patch cords & Optical Splitters

01 GJS-NJ1447

144 Cores



Dimension	590mm × Ø210mm	Patching Capacity	Not Supported
Cable Sealing Type	Compressed Gel	Splicing Capacity	288 Fibers
Cable Entry Ports	2 Ports (for Un-cut Cable)	Number of Splice Trays	6 Trays
Cable Exit Ports	4 Round Ports	Splices per Tray	24/48 Fibers

02 GJS-D5049

32 / 336 / 384 Cores



GJS-D5032A



GJS-D5049



GJS-D5016



Part No.	GJS-D5032A	GJS-D5049	GJS-D5016
Dimension	510mm × Ø225 mm		
Cable Sealing Type	Heat-shrink Seal		
Cable Entry Ports	1 Oval Port (63×40mm)		
Cable Exit Ports	9 Round Ports (4× Ø23mm & 4× Ø20mm & 1× Ø26mm)		
Patching Capacity	32 SC Adapters	Not Supported	Not Supported
No. of Splice Tray	3 Trays(Max)	7 Trays (Max)	16 Trays (Max)
Splicing Capacity	144 Fibers	336/504 Fibers	192/384 Fibers
Suitable Splitter	1×32 cassette splitters	Not Supported	1×8 Micro PLC Splitter

03 GJS-D0484

48 Cores



Cable Sealing Type	Mehcanical Seal	Heat-shrink Seal
Dimension	300mm × Ø190mm	
Splicing Capacity	48 Fibers	
Cable Entry Ports	2 Ports	1 Oval Port
Cable Exit Ports	2 Ports	3 Round Ports
No. of Splice Trays	4 Trays	

04 GJS-D1445

144 Cores



Cable Sealing Type	Heat-shrink Seal
Dimension	455mm × Ø188 mm
Splicing Capacity	144 Fibers
Cable Entry Ports	1 Oval Port
Cable Exit Ports	4 Round Ports
No. of Splice Trays	6 Trays

05 GJS-D1445C

144 Cores



Cable Sealing Type	Mehcanical Seal	Heat-shrink Seal
Dimension	550mm × Ø155 mm	
Splicing Capacity	144 Fibers	
Cable Entry Ports	2 Mid-span Ports	1 Oval Port
Cable Exit Ports	4 Round Ports	4 Round Ports
No. of Splice Trays	6 Trays	

06 GJS-D1445M

144 Cores



Cable Sealing Type	Mehcanical Seal	Heat-shrink Seal
Dimension	460mm × Ø180 mm	
Splicing Capacity	144 Fibers	
Cable Entry Ports	2 Mid-span Ports	1 Oval Port
Cable Exit Ports	4 Round Ports	4 Round Ports
No. of Splice Trays	6 Trays	

07 GJS-D1447C

144 Cores



Cable Sealing Type	Mehcanical Seal	Heat-shrink Seal
Dimension	500mm × Ø220 mm	
Cable Entry Ports	2 Mid-span Ports	1 Oval Port
Cable Exit Ports	4 Round Ports	6 Round Ports
Splicing Capacity	144 Fibers	
No. of Splice Trays	6 Trays	

08 GJS-D1449

144 Cores



Cable Sealing Type	Heat-shrink Seal
Dimension	455mm × Ø188 mm
Cable Entry Ports	1 Oval Port
Cable Exit Ports	8 Round Ports
Splicing Capacity	144 Fibers
No. of Splice Trays	6 Trays

09 GJS-D0025

96/192 Cores



Cable Sealing Type	Mechanical Seal	
Dimension	345mm × 323mm × 192mm	
Cable Entry Ports	2 Mid-span Port	
Cable Exit Ports	6 Round Ports	
Splicing Capacity	192 Fibers	96 Fibers
No. of Splice Trays	16 Trays	8 Trays
Suitable Splitter	Not Supported	1×8 Micro Splitter

10 GJS-D0039

144/288 Cores



Cable Sealing Type	Mehcanical Seal	Heat-shrink Seal
Dimension	420mm × 309mm × 175 mm	
Cable Entry Ports	2 Mid-span Ports	1 Oval Port
Cable Exit Ports	8/24 Drop Ports	8 Round Ports
Splicing Capacity	144 - 288 Fibers	
No. of Splice Trays	12 Trays	
Suitable Splitter	Not Supported	1x8 PLC Splitter

11 GJS-D2887Q

288 Cores



Cable Sealing Type	Mehcanical Seal	Heat-shrink Seal
Dimension	506mm × Ø310 mm	
Splicing Capacity	2 Mid-span Ports	1 Oval Port
Cable Entry Ports	36 Round Ports	6 Round Ports
Cable Exit Ports	288 Fibers	
No. of Splice Trays	24 Trays	

12 GJS-D2887C

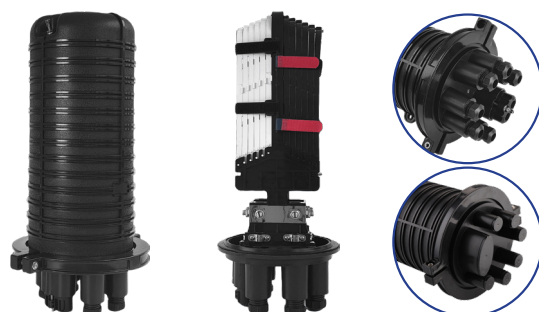
288 Cores



Cable Sealing Type	Mehcanical Seal	Heat-shrink Seal
Dimension	510mm × Ø300 mm	
Splicing Capacity	2 Mid-span Ports	1 Oval Port
Cable Entry Ports	6 Round Ports	6 Round Ports
Cable Exit Ports	288 Fibers	
No. of Splice Trays	12 Trays	

13 GJS-D3847C

384 Cores



Cable Sealing Type	Mehcanical Seal	Heat-shrink Seal
Dimension	550mm × Ø300 mm	
Splicing Capacity	2 Mid-span Ports	1 Oval Port
Cable Entry Ports	6 Round Ports	6 Round Ports
Cable Exit Ports	384 Fibers	
No. of Splice Trays	12 Trays	

14 GJS-D5767C

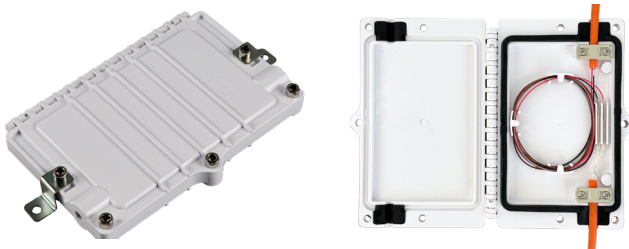
576 Cores



Cable Sealing Type	Mehcanical Seal	Heat-shrink Seal
Dimension	550mm × Ø300 mm	
Splicing Capacity	2 Mid-span Ports	1 Oval Port
Cable Entry Ports	6 Round Ports	6 Round Ports
Cable Exit Ports	576 Fibers	
No. of Splice Trays	24 Trays	

01 GJS-H1102

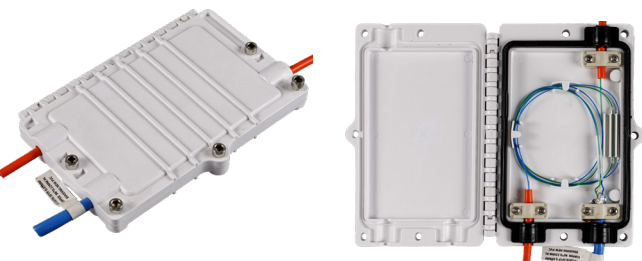
2/4 Cores



Dimension	178mm × 117mm × 22.5mm
Cable Entry / Exit Ports	1 / 1 In-line Ports
Splicing Capacity	2/4 Fibers

02 GJS-H1203

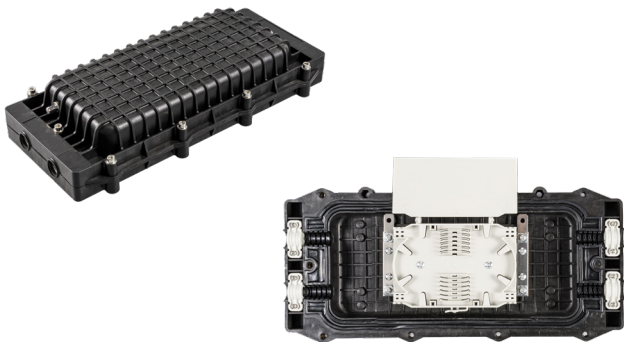
2/4 Cores



Dimension	178mm × 117mm × 22.5mm
Cable Entry / Exit Ports	1 / 2 In-line Ports
Splicing Capacity	2/4 Fibers

03 GJS-H2201

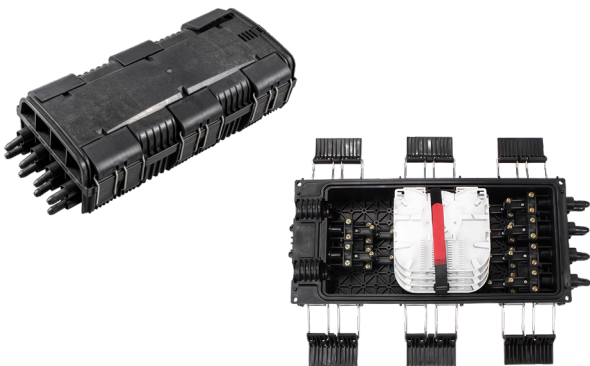
96 Cores



Dimension	404mm × 190mm × 88mm
Cable Entry / Exit Ports	2 / 2 In-line Ports
Splicing Capacity	96 Fibers
No. of Splice Tray	4 Trays

04 GJS-H2012C

96 Cores



Dimension	430mm × 200mm × 120mm
Cable Entry / Exit Ports	2 Ports
Drop Cable Ports	4 / 8 In-line Ports
Splicing Capacity	96 Fibers
No. of Splice Tray	4 Trays

05 GJS-H3305E

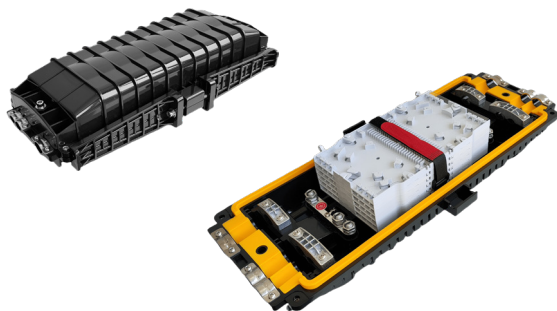
120 Cores



Dimension	369mm × 186mm × 146mm
Cable Entry / Exit Ports	3 / 3 In-line Ports
Splicing Capacity	120 Fibers
No. of Splice Tray	5 Trays

06 GJS-H3350C-6T

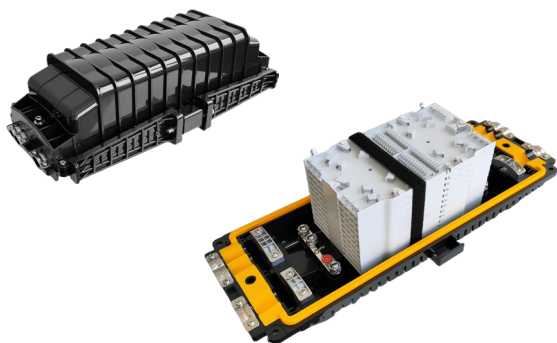
288 Cores



Dimension	495mm × 175mm × 130mm
Cable Entry / Exit Ports	3 / 3 In-line Ports
Splicing Capacity	288 Fibers
No. of Splice Tray	6 Trays

07 GJS-H3350C-12T

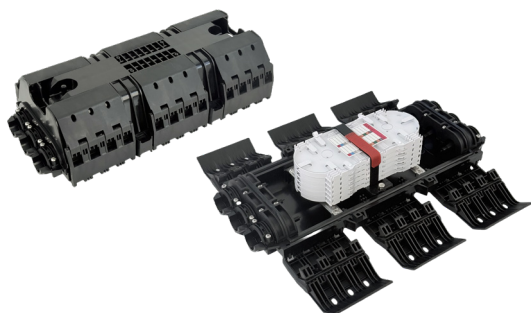
576 Cores



Dimension	495mm × 175mm × 160mm
Cable Entry / Exit Ports	3 / 3 In-line Ports
Splicing Capacity	576 Fibers
No. of Splice Tray	12 Trays

08 GJS-H3353C

144 Cores



Dimension	525mm × 245mm × 150mm
Cable Ports	3 / 3 In-line Ports
Splicing Capacity	144 Fibers
No. of Splice Tray	6 Trays

09 GJS-HF96-8B

96 Cores



Dimension	318mm × 195mm × 82mm
Cable Entry / Exit Ports	2 Mid-span Ports
Drop Cable Ports	8 Ports
Splicing Capacity	96 Fibers
No. of Splice Tray	4 Trays

10 GJS-HF288-6E

288 Cores



Dimension	380mm × 240mm × 130mm
Cable Entry / Exit Ports	2 Mid-span Ports
Drop Cable Ports	8 Ports
Splicing Capacity	288 Fibers
No. of Splice Tray	12 Trays

11 GJS-HF96-16C

16 Cores



Dimension	380mm × 240mm × 130mm
Cable Entry / Exit Ports	2 Mid-span Ports
Branches	2 Blind Ports (PG13.5)
Drop Cable Ports	16 Ports
Splicing Capacity	96 Fibers
No. of Splice Tray	4 Trays

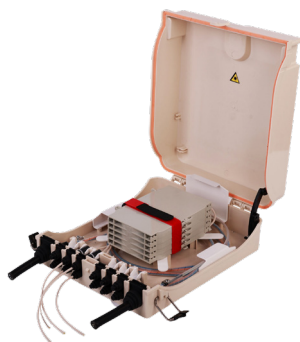
12 ASC-B345-8P

192 Cores



Dimension	345mm × 215mm × 128mm	
Cable Entry / Exit Ports	2 Mid-span Ports	
Drop Cable Ports	8 Ports	
Splicing Capacity	192 Fibers	96 Fibers
No. of Splice Tray	8 Trays (24 F/Tray)	8 Trays (12F/Tray)
Suitable Splitter	Not Supported	Two 1×8 PLC Splitter

01 FDB-T224B



144 Cores (Splicing)

24 Cores (Patching)

Part No.	FDB-T224B-144F	FDB-T224B-24SC
Dimension	296mm × 245mm × 97mm	
Cable Entry / Exit Ports	2 Ports × Ø22mm	
Drop Cable Ports	4 Ports x Ø11mm & 8 Ports x Ø10mm	
Patching Capacity	Not Supported	24 SC Adapters
Splicing Capacity	144 Fibers	72 Fibers
No. of Trays	6 Trays	
Splice Tray	12 / 24 Fibers (Splice Only)	
Splitter Tray	6 / 12 Fibers & 1 Micro PLC Splitter Slot for 1×8 or 1×16	

02 FDB-T224C



144 Cores (Splicing)

24 Cores (Patching)

Part No.	FDB-T224B-144F	FDB-T224B-24SC
Dimension	296mm × 245mm × 97mm	
Cable Entry / Exit Ports	2 Ports × Ø22mm	
Drop Cable Ports	5 ports × Ø15mm	
Patching Capacity	Not Supported	24 SC Adapters
Splicing Capacity	144 Fibers	72 Fibers
No. of Trays	6 Trays	
Splice Tray	12 / 24 Fibers (Splice Only)	
Splitter Tray	6 / 12 Fibers & 1 Micro PLC Splitter Slot for 1×8 or 1×16	

03 FDB-2K

2 Cores



04 FDB-4K

4 Cores



05 FDB-6K

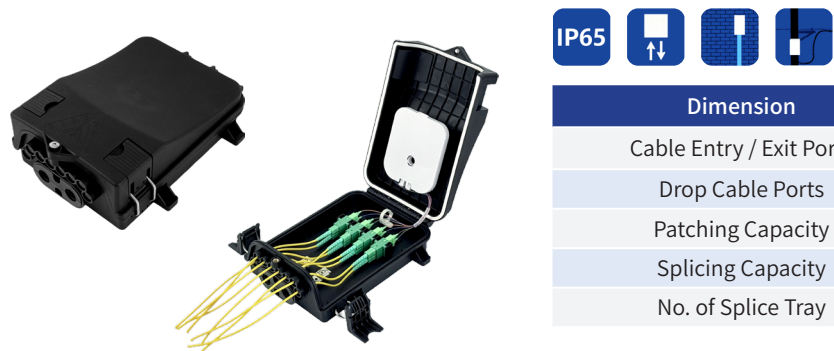
6 Cores



Part No.	FDB-2K	FDB-4K	FDB-6K
Dimension	210mm × 135mm × 40mm		
Cable Entry Ports	1 Port		
Drop Cable Ports	2 Ports	4 Ports	6 Ports
Patching Capacity	2 SC Adapters	4 SC Adapters	6 SC Adapters
Splicing Capacity	4/8 Fibers		
Suitable Splitter	1×2 Micro PLC Splitter	1×4 Micro PLC Splitter	1×6 Micro PLC Splitter

06 FDB-8BJ2

8 Cores



Dimension	257mm × 196.5mm × 82mm
Cable Entry / Exit Ports	2 Mid-span Ports
Drop Cable Ports	8 Ports
Patching Capacity	8 SC Adapters
Splicing Capacity	12 Fibers
No. of Splice Tray	1 Tray

07 FDB-12C-8S

8 Cores



08 FDB-12C-12A

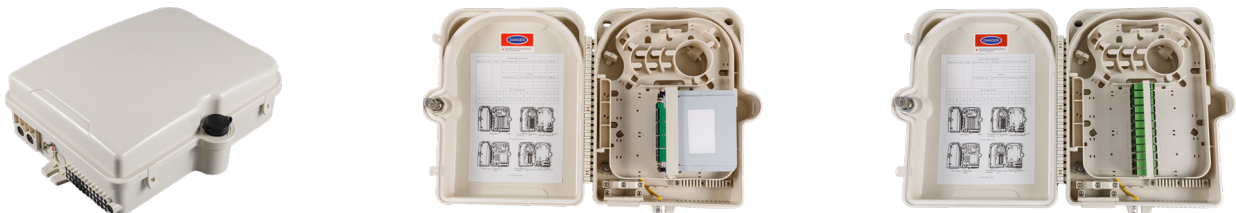
12 Cores



Part No.	FDB-12C-8S	FDB-12C-12A
Dimension	225mm × 200mm × 65mm	
Cable Entry / Exit Ports	2 Mid-span Ports	
Branches	1 Blind Port	
Drop Cable Ports	12 Ports	
Patching Capacity	8 SC Adapters	12 SC Adapters
Splicing Capacity	20 Fibers	
Suitable Splitter	1×8 Cassette PLC Splitter	1×4 / 1×8 Micro PLC Splitter

09 FDB-24C

16/24 Cores



Cassette Splitter Type

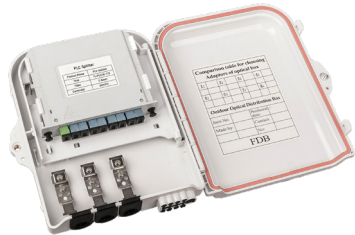
Adapter Type



Part No.	FDB-24C-16S	FDB-24C-24A
Dimension	330mm × 275mm × 100.5mm	
Cable Entry / Exit Ports	2 Mid-span ports	
Branches	1 Blind Port	
Drop Cable Ports	24 Drop cable ports	
Patching Capacity	16 SC Adapters	24 SC Adapters
Splicing Capacity	24 Fibers	
Suitable Splitter	1×16 Cassette PLC Splitters	1×8 / 1×16 Micro PLC Splitters

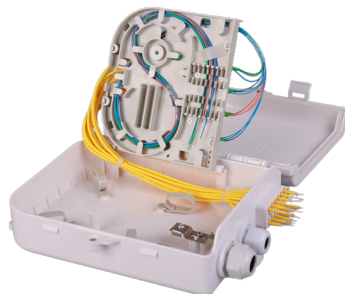
10 FDB-8E

8 Cores



11 FDB-12E

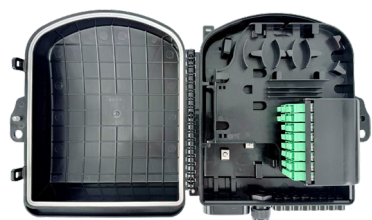
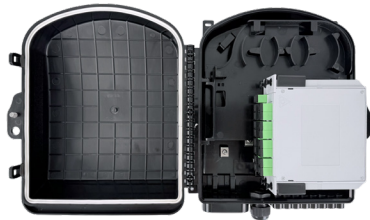
12 Cores



Part No.	FDB-8E	FDB-12E
Dimension	230mm × 195mm × 55mm	247mm × 202mm × 77mm
Cable Entry Ports	1 Port (PG13.5)	1 Port (PG16)
Cable Exit Ports	2 Port (PG13.5)	1 Port (PG13.5)
Drop Cable Ports	8 Ports	12 Ports
Patching Capacity	8 SC Adapters	12 SC Adapters
Splicing Capacity	8/16 Fibers	8/16 Fibers
Suitable Splitter	1 × 8 Micro or Cassette PLC Splitter	1 × 4 & 1 × 8 Micro PLC Splitter

12 FDB-16J

16/24 Cores



Cassette Splitter Type

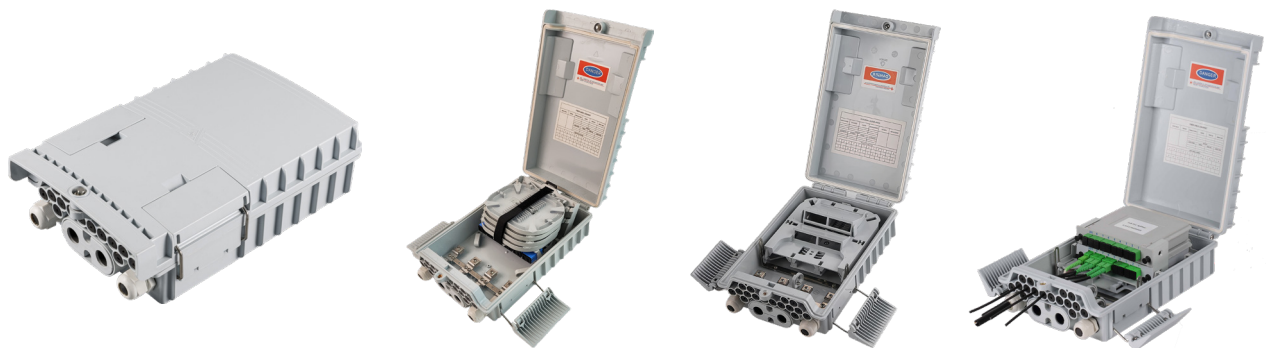
Adapter Type



Part No.	FDB-16J-16S	FDB-16J-24A
Dimension	253mm × 198mm × 100mm	
Cable Entry / Exit Ports	2 Mid-span Ports	
Branches	1 Blind Port	
Drop Cable Ports	16 Ports	24 Ports
Patching Capacity	16 SC Adapters	24 SC Adapters
Splicing Capacity	4/8 Fibers	16/32 Fibers
Suitable Splitter	1 × 16 Cassette PLC Splitter	Two of 1 × 8 Micro PLC Splitter

13 FDB-16P

12/16 Cores



12 Adapters Type

16 Adapters Type

Cassette Splitter Type



Part No.	FDB-16P-12A	FDB-16P-16A	FDB-16P-16S
Dimension	298mm × 175mm × 83mm		
Cable Entry / Exit Ports	2 Mid-span port		
Branches	2 Blind Ports (PG13.5)		
Drop Cable Ports	16 Ports		
Patching Capacity	12 SC Adapters	16 SC Adapters	16 SC Adapters
Splicing Capacity	48/96 Fibers	8/16 Fibers	8/16 Fibers
No. of Splice Tray	4 Trays	1 Tray	1 Tray
Suitable Splitter	1×8 Micro PLC Splitter	1×8 Micro PLC Splitter	1×16 Cassette PLC Splitter

14 FDB-24N3

24 Cores



Dimension	344mm × 210mm × 103mm
Cable Entry / Exit Ports	2 Mid-span Ports
Branches	2 Blind Ports (PG13.5)
Drop Cable Ports	24 ports
Patching Capacity	24 SC Adapters
Splicing Capacity	48/96 Fibers
No. of Splice Tray	4 Trays (Max)
Suitable Splitter	1×8 or 1×16 Micro PLC Splitter / Tray

15 FDB-16Q

16 Cores



16 Adapters Type



16 Adapters Type



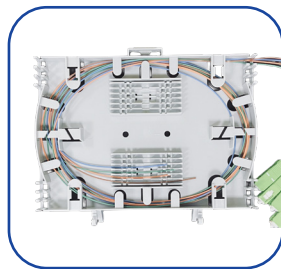
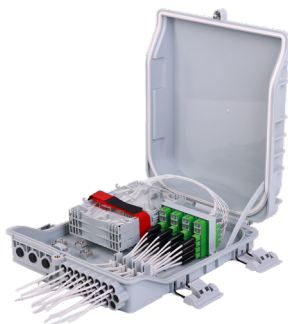
Cassette Splitter Type



Part No.	FDB-16Q-16A1	FDB-16Q-16A2	FDB-16Q-16S
Dimension	288mm × 172mm × 103mm		
Cable Entry / Exit Ports	2 Mid-span port		
Branches	2 Blind Ports (PG13.5)		
Drop Cable Ports	16 Ports		
Patching Capacity	16 SC Adapters	16 SC Adapters	16 SC Adapters
Splicing Capacity	48 Fibers	8/16 Fibers	8/16 Fibers
No. of Splice Tray	2 Trays	1 Tray	1 Tray
Suitable Splitter	1×8 or 1×16 Micro Splitter	1×8 or 1×16 Micro Splitter	1×16 Cassette PLC Splitter

16 FDB-24Z

24 Cores



Dimension	327mm × 262mm × 86mm		
Cable Entry / Exit Ports	3 Mid-span Ports		
Drop Cable Ports	24 ports		
Patching Capacity	24 SC Adapters		
Splicing Capacity	72 Fibers	36 Fibers	36 Fibers
No. of Splice Tray	3 Trays		
Splitter Module	Not Supported	Two 1×8 Micro PLC Splitter	1×16 Micro PLC Splitter

17 FDB-24R

24 Cores



Part No.	FDB-24R1	FDB-24R2
Dimension	300.5mm × 214mm × 93mm	
Cable Entry / Exit Ports	2 Mid-span Ports	
Branches	2 Blind Ports (PG16)	
Drop Cable Ports	24 Ports	
Patching Capacity	24 SC Adapters	
Splicing Capacity	12/24 Fibers	24/48 Fibers
No. of Splice Tray	1 Tray	2 Trays
Suitable Splitter	1×8 or 1×16 Micro PLC Splitter	1×8 or 1×16 Micro PLC Splitter

18 FDB-72K

64/72 Cores



Cassette Splitter Type

Adapter Type



Part No.	FDB-72K-64S	FDB-72K-72A
Dimension	420mm × 356mm × 185mm	
Cable Ports	6 / 6 In-line Ports	
Patching Capacity	64 SC Adapters	72 SC Adapters
Splicing Capacity	72 Fibers	
No. of Splice Tray	3 Trays	
Suitable Splitter	1×8 or 1×16 Cassette PLC Splitter	1×8 or 1×16 Micro PLC Splitter

19 FDB-T227



144 Cores (Splicing)



16 Cores (Patching)



Part No.	FDB-T227-144F	FDB-T227-16SC
Dimension	299mm × 224mm × 95mm	
Cable Entry Ports	2 Ports	
Branches	2 Blind Ports (PG16)	
Drop Cable Ports	16 Ports	
Patching Capacity	Not Supported	16 SC Adapters
Splicing Capacity	144 Fibers	144 Fibers
No. of Splice Tray	6 Trays	6 Trays
Suitable Splitter	1×8 or 1×16 Micro PLC Splitter	1×8 or 1×16 Micro PLC Splitter

20 FDB-T281

12 Cores



Part No.	FDB-T281	FDB-T281B
Dimension	266mm × 160mm × 60mm	
Cable Entry Ports	1 Port	
Drop Cable Ports	6 Ports	
Patching Capacity	12 SC Adapters	12 SC Adapters
Splicing Capacity	Not Supported	16 Fibers
No. of Splice Tray	Not Supported	2 Trays
Suitable Splitter	1×8 or 1×12 Micro PLC Splitter	1×8 Micro PLC Splitter / Tray

21

FDB-A1112

48 Cores



Dimension	143mm × 136mm × 61.5mm
Cable Entry Ports	1 / 1 In-line Ports
Drop Cable Ports	12 Ports
Splicing Capacity	48 Fibers
No. of Splice Tray	4 Trays

22

FDB-A2208

8 Cores



Dimension	304mm × 192mm × 73mm
Cable Entry / Exit Ports	2 / 2 In-line Ports
Drop Cable Ports	8 Ports
Splicing Capacity	12/24 Fibers
Suitable Splitter	1 × 8 Cassette PLC Splitter

23

FDB-A3316

8/16 Cores



Cassette Splitter Type

Adapter Type



Part No.	FDB-A3316-8S	FDB-A3316-16A
Dimension	290mm × 185mm × 108mm	
Cable Entry Ports	3 / 3 In-line Ports	
Drop Cable Ports	16 Ports	
Patching Capacity	8 SC Adapters	16 SC Adapters
Splicing Capacity	24 Fibers	
No. of Splice Tray	1 Tray	
Suitable Splitter	1 × 8 Cassette PLC Splitter	Two 1 × 8 & One 1 × 16 Micro Splitter

01 FAT-C12Y

12/8/4 Cores



Part No.	FAT-C12Y-12P	FAT-C12Y-8P	FAT-C12Y-4P
Dimension	330mm × 232mm × 127mm		
Cable Entry / Exit Ports	2 Mid-span Ports		
Branches	2 Blind Ports (PG13.5)		
Terminal Ports	12 Hardened Drop Ports	8 Hardened Drop Ports	4 Hardened Drop Ports
Suitable Connector Type	Corning Hardened Connectors		
Patching Capacity	12 SC or LC duplex Adapters	8 SC or LC duplex Adapters	4 SC or LC duplex Adapters
No. of Splice Tray	2 Trays		
Splitter Module / Tray	Not Supported	Two 1×8 Micro PLC Splitter	1×16 Micro PLC Splitter
Splicing Capacity	24/48 Fibers	12/24 Fibers	12/24 Fibers

02 FAT-C4PA

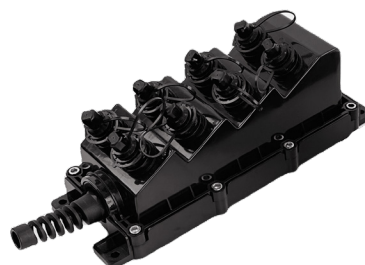
4 Cores



Part No.	FAT-C4PA	FAT-C8PA
Dimension	210mm × 105mm × 93mm	280mm × 105mm × 93mm
Cable Entry Ports	1 Port	
Terminal Ports	4 Hardened Drop Ports	8 Hardened Drop Ports
Suitable Connector Type	Corning Hardened Connectors	
Patching Capacity	4 SC or LC duplex Adapters	8 SC or LC duplex Adapters
Splicing Capacity	4/8 Fibers	
Suitable Splitter	1×4 Micro PLC Splitter	1×8 Micro PLC Splitter

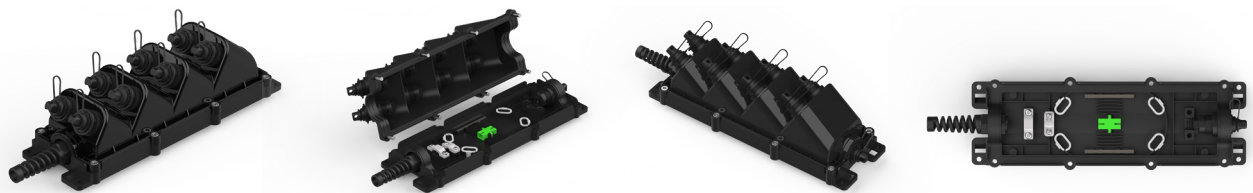
03 FAT-C8PA

4 Cores



04 FAT-FF8N2

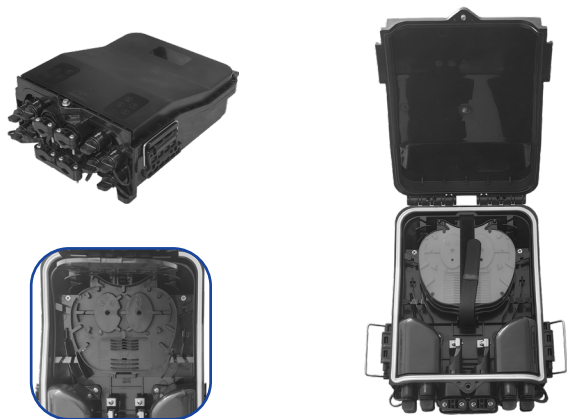
9 Cores



Dimension	336mm × 102mm × 93mm	Patching Capacity	9 SC or LC Duplex Adapters
Cable Entry Port	1 Port	Splicing Capacity	8/16 Fibers
Terminal Ports	9 Hardened Drop Ports	Suitable Splitter	1×8 or 1×9 Micro PLC Splitter
Suitable Connector Type	Corning Hardened Connectors		

05 FAT-H8TC

8 Cores



Part No.	FAT-H8TC	FAT-H16TC
Dimension	299mm × 185mm × 108mm	319mm × 215mm × 133mm
Cable Entry / Exit Ports	2 Mid-span Ports	
Branches	2 Ports	
Terminal Ports	8 Hardened Drop Ports	16 Hardened Drop Ports
Suitable Connector Type	Huawei Hardened Connectors	
Patching Capacity	8 SC or LC Duplex Adapters	16 SC or LC Duplex Adapters
Splicing Capacity	24 Fibers	72 Fibers
No. of Splice Tray	4 Trays	6 Trays
Suitable Splitter	1×8 or 1×16 Micro PLC Splitter	1×8 or 1×16 Micro PLC Splitter

06 FAT-H16TC

16 Cores



07 FAT-HT10BP

8/9 Cores



Dimension	210mm × 210mm × 85mm	Patching Capacity	9 SC or LC Duplex Adapters
Cable Entry Port	1 Hardened Connector Port	Splicing Capacity	2/4 Fibers
Terminal Ports	9 Hardened Drop Ports	Suitable Splitter	1×2 & 1×8 or 1×9 Splitter
Suitable Connector Type	Huawei or Tyco Hardened Connectors		

08 FAT-H10DP

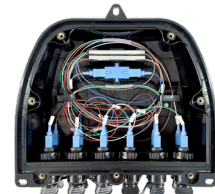
10/11 Cores



Dimension	223mm × 180mm × 76mm	Patching Capacity	11 SC or LC Duplex Adapters
Cable Entry Port	1 Hardened Connector Port	Splicing Capacity	2/4 Fibers
Terminal Ports	11 Hardened Drop Ports	Suitable Splitter	1×4 & 1×8 or 1×11 Splitter
Suitable Connector Type	Huawei Hardened Connectors		

09 FAT-HT12WX

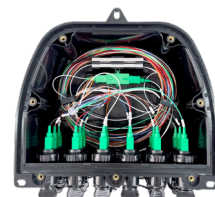
11 Cores



Dimension	200mm × 180mm × 79mm	Patching Capacity	11 SC or LC Duplex Adapters
Cable Entry Port	1 Hardened Connector Port	Splicing Capacity	2/4 Fibers
Terminal Ports	11 Hardened Drop Ports	Suitable Splitter	1×4 & 1×8 or 1×11 Splitter
Suitable Connector Type	Huawei Hardened Connectors		

10 FAT-HT18WX

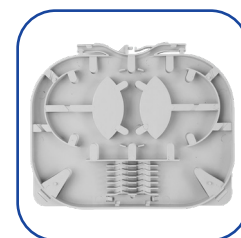
17 Cores



Dimension	200mm × 180mm × 108mm	Patching Capacity	17 SC or LC Duplex Adapters
Cable Entry Port	1 Hardened Connector Port	Splicing Capacity	2/4 Fibers
Terminal Ports	17 Hardened Drop Ports	Suitable Splitter	1×2 & 1×16 PLC Splitter
Suitable Connector Type	Huawei Hardened Connectors		

11 FAT-H16FA

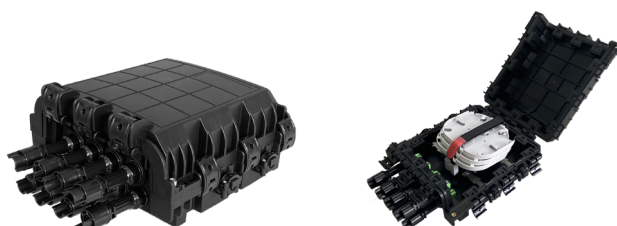
16 Cores



Dimension	330mm × 210mm × 87mm	Patching Capacity	16 SC or LC Duplex Adapters
Cable Entry / Exit Ports	2 Mid-span Ports	Splicing Capacity	60 Fibers
Branches	2 Blind Ports (PG13.5)	No. of Splice Tray	5 Trays
Terminal Ports	16 Hardened Drop Ports	Suitable Splitter	1×8 Micro PLC Splitter / Tray
Suitable Connector Type	Huawei Hardened Connectors		

12 FAT-T8XS

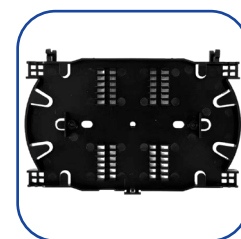
8 Cores



Dimension	320mm × 240mm × 128mm	Patching Capacity	8 SC or LC Duplex Adapters
Cable Entry Port	4 Ports	Splicing Capacity	36 Fibers
Terminal Ports	8 Hardened Drop Ports	No. of Splice Tray	3 Trays
Suitable Connector Type	Tyco Hardened Connectors	Suitable Splitter	1×8 Micro PLC Splitter / Tray

13 FAT-T16XS

16 Cores



Dimension	350mm × 270mm × 105mm	Patching Capacity	16 SC or LC Duplex Adapters
Cable Entry Port	4 Ports	Splicing Capacity	48 Fibers
Terminal Ports	16 Hardened Drop Ports	No. of Splice Tray	2 Trays
Suitable Connector Type	Tyco Hardened Connectors	Suitable Splitter	1×8 or 1×16 PLC Splitter / Tray

01 FB-T204

12 Cores



Dimension	182mm × 124mm × 40mm	Splicing Capacity	12 Fibers
Cable Entry / Exit Ports	1 / 2 In-line Ports	No. of Splice Tray	1 Tray
Drop Cable Ports	12 Ports	Suitable Splitter	Not Supported

02 FB-T404

12 Cores



Dimension	183mm × 123mm × 37mm	Splicing Capacity	12 / 24 Fibers
Cable Entry / Exit Ports	1 / 2 In-line Ports	No. of Splice Tray	1 Tray
Drop Cable Ports	12 / 24 Ports	Suitable Splitter	Not Supported

03 FB-T404S8

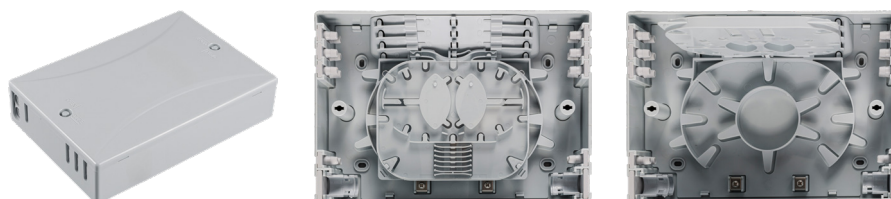
12 Cores



Dimension	133mm × 103mm × 30mm	Splicing Capacity	6 / 12 Fibers
Cable Entry / Exit Ports	1 / 1 In-line Ports	No. of Splice Tray	1 Tray
Drop Cable Ports	8 / 12 In-line Ports	Suitable Splitter	1 × 8 Micro PLC Splitter

04 FB-T418

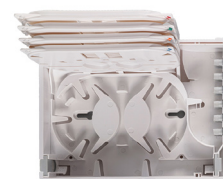
48 Cores



Dimension	240mm × 165mm × 54mm	Splicing Capacity	24/48 Fibers
Cable Entry / Exit Ports	2 / 2 In-line Ports	No. of Splice Tray	4 Trays
Drop Cable Ports	8 / 8 In-line Ports	Suitable Splitter	1 × 8 Micro PLC Splitter

05 FB-T408

36 Cores



Dimension	204mm × 158mm × 54mm	Splicing Capacity	32 / 36 Fibers
Cable Entry / Exit Ports	1 / 1 In-line Ports	No. of Splice Trays	4 Trays
Drop Cable Ports	12 Ports	Suitable Splitter	1 × 4 Micro PLC Splitter / Tray

06 FB-T408-12A

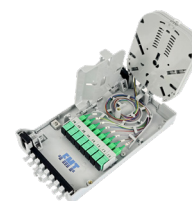
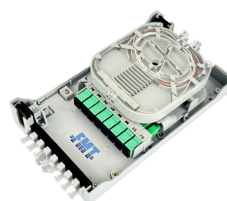
12 Cores



Dimension	204mm × 158mm × 54mm	Patching Capacity	12 SC or LC Duplex Adapters
Cable Entry / Exit Ports	1 / 1 In-line Ports	Splicing Capacity	32 / 36 Fibers
Drop Cable Ports	12 Adapter Ports	No. of Splice Trays	4 Trays
Mounting	Wall Mount	Suitable Splitter	1 × 4 Micro PLC Splitter / Tray

07 FB-T423

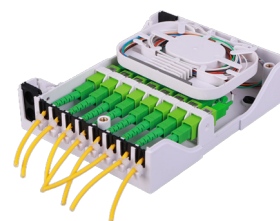
8 Cores



Dimension	235mm × 126mm × 52mm	Patching Capacity	8 SC Adapters
Cable Entry / Exit Ports	2 / 2 In-line Ports	Splicing Capacity	16 Fibers
Drop Cable Ports	8 Ports	No. of Splice Trays	2 Trays
Mounting	Wall Mount	Suitable Splitter	1 × 8 Micro PLC Splitter / Tray

08 FB-T427

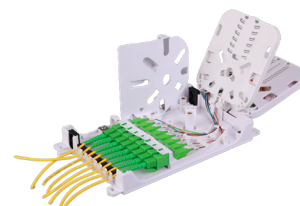
8 Cores



Dimension	169mm × 130mm × 44mm	Patching Capacity	8 SC Adapters
Cable Entry / Exit Ports	2 / 2 In-line Ports	Splicing Capacity	8 Fibers
Drop Cable Ports	8 Ports	No. of Splice Trays	1 Trays
Mounting	Wall Mount	Suitable Splitter	1 × 8 Micro PLC Splitter

09 FB-T428

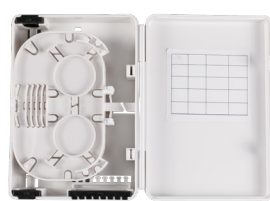
8 Cores



Dimension	215mm × 126mm × 50mm	Patching Capacity	8 SC Adapters
Cable Entry / Exit Ports	2 / 2 In-line Ports	Splicing Capacity	4 / 8 Fibers
Drop Cable Ports	8 Ports	No. of Splice Trays	2 Trays
Strength member fixture	Pre-installed (Optional)	Suitable Splitter	1×8 Micro PLC Splitter / Tray
Cable Dust Cover	Optional	Mechanical Splice Tray	6 F/Tray (Optional)

10 FB-T433

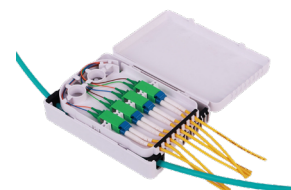
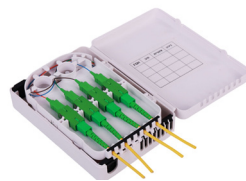
8 Cores



Dimension	150mm × 108mm × 36mm	Splicing Capacity	4 / 8 Fibers
Cable Entry / Exit Ports	1 / 1 In-line Ports	No. of Splice Trays	2 Trays
Drop Cable Ports	8 Ports	Suitable Splitter	1×4 Micro PLC Splitter / Tray

11 FB-T434

8 Cores



Dimension	150mm × 108mm × 36mm	Patching Capacity	8 SC or LC Duplex Adapters
Cable Entry / Exit Ports	1 / 1 In-line Ports	Splicing Capacity	4 / 8 Fibers
Drop Cable Ports	8 Ports	No. of Splice Trays	1 Tray
Mounting	Wall Mount	Suitable Splitter	1×4 / 1×8 Micro PLC Splitter

12 FB-T448-1P

2 Core



Dimension	198mm × 112mm × 45mm	Patching Capacity	1 SC or LC Duplex Adapters
Cable Entry / Exit Ports	2 Ports	Splicing Capacity	6 / 12 Fibers
Drop Cable Port	1 Adapter Port	Cable Dust Cover	Optional

13 FB-T448-8P

8 Cores



Dimension	198mm × 112mm × 45mm	Patching Capacity	8 SC Adapters
Cable Entry Ports	2 Ports	Splicing Capacity	6 / 12 Fibers
Drop Cable Ports	12 Ports	Cable Dust Cover	Optional

14 FB-T449-18P

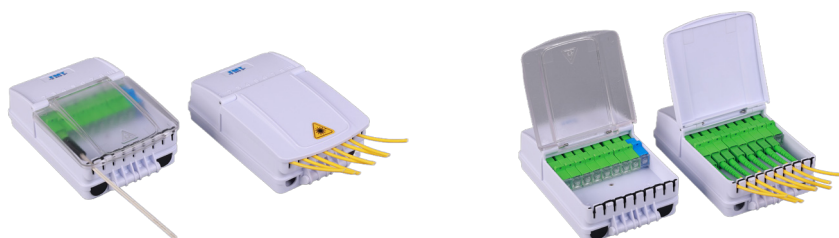
18 Cores



Dimension	265mm × 153mm × 55mm	Patching Capacity	18 SC Adapters
Cable Entry Ports	2 Ports	Splicing Capacity	12 / 24 Fibers
Drop Cable Ports	24 Ports	No. of Splice Trays	1 Tray

15 FB-T489

8 Cores



Dimension	148mm × 98mm × 50mm	Patching Capacity	8 or 9 SC Adapters
Cable Entry / Exit Ports	1 / 2 In-line Ports	Splicing Capacity	1 / 2 Fibers
Drop Cable Ports	8 Ports	Suitable Splitter	1×8 or 1×9 Micro PLC Splitter

16 FB-T4210

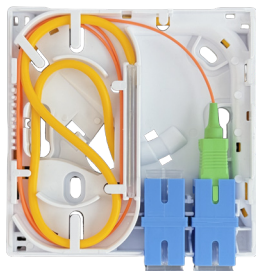
9 Cores



Dimension	120mm × 74mm × 51mm	Patching Capacity	8 or 9 SC Adapters
Cable Entry / Exit Ports	1 / 1 Ports for SC Connectors	Suitable Splitter	1×2 & 1×8 or 1×9 Splitter
Drop Cable Ports	8 Ports for SC Connectors	Mounting	Wall Mount

01 GP-T801

2 Cores



Dimension	80mm × 80mm × 20.5mm
Inlet Cable	1
Cable Size	Ø3mm or 3*2mm Drop Cable
Adapter Ports	2 SC Adapter
Splicing Capacity	1/2 Fibers

02 GP-861

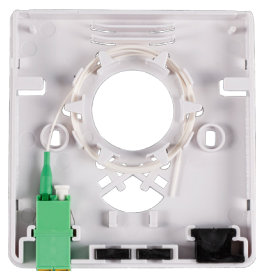
2 Cores



Dimension	86mm × 86mm × 21.5mm
Inlet Cable	2
Cable Size	3*2mm Drop Cable
Adapter Ports	2 SC Adapter
Splicing Capacity	1 Fibers

03 GP-T862

2/4 Cores



Dimension	100mm × 95mm × 16mm
Inlet Cable	4
Cable Size	3*2mm Drop Cable
Adapter Ports	2 SC or LC Duplex Adapter
Splicing Capacity	2/4 Fibers

04 GP-T863

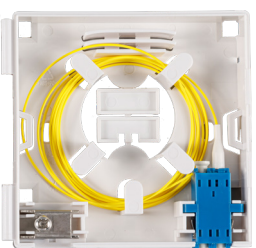
2 Cores



Dimension	86mm × 86mm × 26mm
Inlet Cable	4
Cable Size	3*2mm Drop Cable
Adapter Ports	2 SC Adapter
Splicing Capacity	1/2 Fibers

05 GP-867

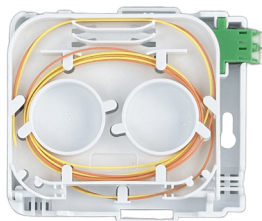
2/4 Cores



Dimension	112mm × 86mm × 23mm
Inlet Cable	2
Cable Size	3*2mm Drop Cable
Adapter Ports	2 SC or LC Duplex Adapters
Splicing Capacity	2/4 Fibers

06 GP-T868

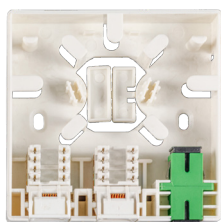
1 Cores



Dimension	115mm × 86mm × 23mm
Inlet Cable	3
Cable Size	3*2mm Drop Cable
Adapter Ports	1 SC or LC Duplex Adapters
Splicing Capacity	2/4 Fibers

07 GP-T8621

1 Cores



Dimension	86mm × 86mm × 25mm
Terminal Ports	2 RJ Module + 1 Connector
RJ Module	RJ11 / RJ45 Module
Adapter Ports	1 SC Adapters
Splicing Capacity	Not Supported

08 GP-T8628

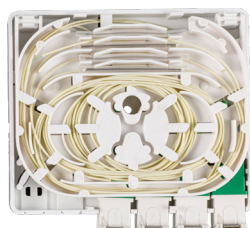
1 Cores



Dimension	100mm × 80mm × 22.5mm
Inlet Cable	2
Cable Size	3*2mm Drop Cable
Adapter Ports	2 SC Adapter
Splicing Capacity	2/4 Fibers

09 GP-T8656

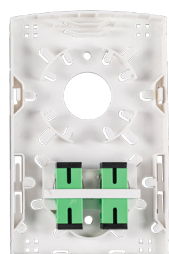
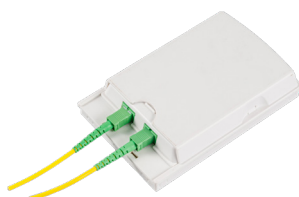
4 Cores



Dimension	100mm × 80mm × 29mm
Inlet Cable	2
Cable Size	3*2mm Drop Cable
Adapter Ports	4 SC Adapter
Splicing Capacity	4/8 Fibers

10 GP-T8683

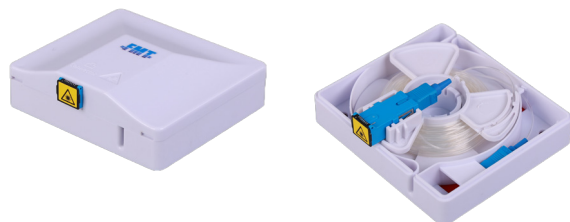
2 Cores



Dimension	130mm × 83mm × 23.5mm
Inlet Cable	2 / 2 In-line
Cable Size	3*2mm Drop Cable
Adapter Ports	2 SC Adapter
Splicing Capacity	2 Fibers

11 GP-T8693

1 Cores



Dimension	93mm × 86mm × 29mm
Adapter Ports	1 SC Adapters
Splicing Capacity	Not Supported
Cable Diameter	0.9mm
Cable Length	20 Meters

12 GP-T1170

2 Cores



Dimension	117mm × 70mm × 20mm
Ø3mm Inlet Cable	3
3*2mm Inlet Cable	4
Terminal Ports	2 SC Adapter or RJ Module
Splicing Capacity	1 Fibers

13 GP-T1480

1 Cores



Dimension	148mm × 89mm × 16mm
Inlet Cable	2 / 2 In-line
Cable Size	Ø3mm Drop Cable
Patching Capacity	1 SC Adapter
Splicing Capacity	1/2 Fibers

14 GP-T1500

1 Cores



Dimension	150mm × 50mm × 25mm
Inlet Cable	1 / 1 In-line
Cable Size	Ø3mm & 3*2mm Drop Cable
Patching Capacity	1 SC Adapter
Splicing Capacity	Not Supported

15 GP-T1600

1 Cores



Dimension	160mm × 45.5mm × 17.5mm
Inlet Cable	1 / 1 In-line
Cable Size	Ø3mm Drop Cable
Patching Capacity	1 SC Adapter
Splicing Capacity (Either)	1 Fibers

16 GP-T1900

1 Cores



Dimension	190mm × 80mm × 30mm
Inlet Cable	1 / 1 In-line
Cable Size	Ø3mm Drop Cable
Patching Capacity	Not Supported
Splicing Capacity	1 Fibers

17 GP-T1880

6 Cores



Dimension	188mm × 88mm × 22mm
Inlet Cable	1 / 1 In-line
Cable Size	Ø3mm Drop Cable
Patching Capacity	Not Supported
Splicing Capacity	6 Fibers

18 GP-T2050

8 Cores



Dimension	206mm × 110mm × 28mm
Inlet Cable	4 × (3×2mm) & 1×Ø3mm
Patching Capacity	8 SC Adapters
Splicing Capacity	8 Fibers
Suitable Splitter	1×8 Micro PLC Splitter

19 GP-T9548

2 Cores



Dimension	95mm × 48mm × 11.5mm
Cable Entry / Exit Ports	2 / 2 In-line Ports
Cable Size	3*2mm Drop Cable
Patching Capacity	Not Supported
Splicing Capacity	2 Fibers

20 GP-T9570

3 Cores



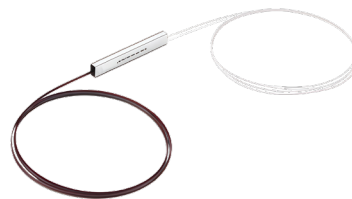
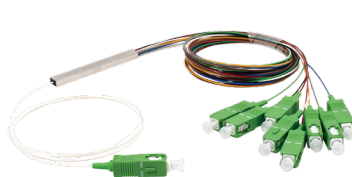
Dimension	95mm × 70mm × 11.5mm
Cable Entry / Exit Ports	3 / 3 In-line Ports
Cable Size	3*2mm Drop Cable
Patching Capacity	Not Supported
Splicing Capacity	3 Fibers

Parameters	Mode	Insertion Loss (dB)	Repeatability (dB)	Mechanism durability	Operating Temp (°C)
FC SC LC ST	SM /MM	≤ 0.2	≤ 0.1	> 1000	-40 ~ 85
MTP					

Parameters (Unit)	Insertion Loss (dB)	Return Loss (dB)		Repeatability (dB)	Push - Pull Times	Operating Temp (°C)	Cable Type	Cable Diameter
		PC ≥	APC ≥					
FC SC LC ST	SM /MM	50	55	0.1	> 1000	-40 ~ 85	G652,G657. SM,MM,etc.	0.9mm, 1.8mm, 2.0mm, 3.0mmor customized
MTP		/						

Parameters (Unit)	Insertion Loss (dB)	Return Loss (dB)		Repeatability (dB)	Push - Pull Times	Operating Temp (°C)	Cable Type	Cable Diameter
		PC ≥	APC ≥					
FC SC LC ST	SM /MM	50	55	0.1	> 1000	-40 ~ 85	G652,G657. SM,MM,etc.	0.9mm, 1.8mm, 2.0mm, 3.0mmor customized
MTP		/						

04 PLC Splitter Blockless and Bare Type



Specifications

PLC Splitter Blockless Type

PLC Splitter Bare Type

Parameters	Operating Wavelength (nm)	Insertion Loss(dB) Max	Uniformity (dB) Max	Return Loss (dB)		PDL (dB) Max	Directivity (dB) Min	Operating Temperature (°C)	Storage Temperature (°C)	Packaging Size L x W x H (mm)	
				UPC ≥	APC ≥					Bare	Blockless
1×2	1260 ~ 1650	4	0.8	50	55	0.2	55	-40 ~ 85	-40 ~ 85	40×4×4	60×7×4
1×4		7.2	0.8	50	55	0.2	55				
1×8		10.3	0.8	50	55	0.3	55				
1×16		13.6	1	50	55	0.3	55			50×7×4	60×12×4
1×32		16.9	1.5	50	55	0.3	55				
1×64		20.2	2	50	55	0.4	55				
2×2		4.2	0.8	50	55	0.2	55			60×12×4	80×20×6
2×4		7.6	1	50	55	0.2	55				
2×8		10.6	1	50	55	0.4	55				
2×16		14.2	1.2	50	55	0.4	55			50×4×4	60×7×4
2×32		17.4	1.7	50	55	0.4	55				
2×64		20.7	2.2	50	55	0.5	55				
										60×7×4	80×12×6
										60×12×4	100×20×6
										60×12×4	100×40×6

05 PLC Splitter Cassette Type



Features

- Provide 1 xN and 2 xN series
- Low insertion loss and high return loss
- Guaranteed optical performance and high reliability
- Customized all types of connectors
- Customized fiber type

Specifications

Parameters	Operating Wavelength (nm)	Insertion Loss(dB) Max	Uniformity (dB) Max	Return Loss (dB)		PDL (dB) Max	Directivity (dB) Min	Operating Temperature (°C)	Storage Temperature (°C)	Packaging Size L x W x H (mm)
				UPC ≥	APC ≥					
1×2	1260 ~ 1650	4.2	0.8	50	55	0.2	55	-40 ~ 85	-40 ~ 85	130×100×25
1×4		7.6	0.8	50	55	0.2	55			
1×8		10.7	0.8	50	55	0.3	55			
1×16		14	1	50	55	0.3	55			
1×32		17.2	1.5	50	55	0.3	55			130×100×50
1×64		20.6	2	50	55	0.4	55			
2×2		4.6	0.8	50	55	0.2	55			
2×4		8	1	50	55	0.2	55			
2×8		11	1	50	55	0.4	55			130×100×102
2×16		14.6	1.2	50	55	0.4	55			
2×32		17.8	1.7	50	55	0.4	55			
2×64		21	2.2	50	55	0.5	55			
										130×180×102

06 PLC Splitter Module Type



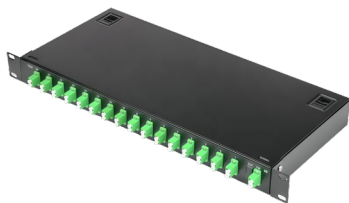
Features

- Provide 1 x N and 2 x N series
- Low insertion loss and high return loss
- Guaranteed optical performance and high reliability
- Customized all types of connectors
- Customized fiber diameter, fiber type and length

Specifications

Parameters	Operating Wavelength (nm)	Insertion Loss(dB) Max	Uniformity (dB) Max	Return Loss (dB)		PDL (dB) Max	Directivity (dB) Min	Operating Temperature (°C)	Storage Temperature (°C)	Packaging Size L x W x H (mm)
				UPC ≥	APC ≥					
1×2	1260 ~ 1650	4.1	0.8	50	55	0.2	55	-40 ~ 85	-40 ~ 85	100x80 x10
1×4		7.4	0.8	50	55	0.2	55			
1×8		10.5	0.8	50	55	0.3	55			
1×16		13.8	1	50	55	0.3	55			
1×32		17.1	1.5	50	55	0.3	55			120x80x18
1×64		20.4	2	50	55	0.4	55			
1×128		23.8	2.5	50	55	0.5	55			140x114x18
2×2		4.4	1	50	55	0.2	55			100x80x10
2×4		7.8	1	50	55	0.2	55			
2×8		10.8	1	50	55	0.4	55			
2×16		14.4	1.2	50	55	0.4	55			
2×32		17.6	1.7	50	55	0.4	55			120 x 80 x 18
2×64		20.9	2.2	50	55	0.5	55			
2×128		24.3	2.7	50	55	0.6	55			140x114x18

07 PLC Splitter Rack -Mount Box



Features

- Provide 1 xN and 2 x N series
- Low insertion loss and high return loss
- Guaranteed optical performance and high reliability
- Customized all types of connectors
- Customized fiber type

Specifications

Parameters	Operating Wavelength (nm)	Insertion Loss(dB) Max	Uniformity (dB) Max	Return Loss (dB)		PDL (dB) Max	Directivity (dB) Min	Operating Temperature (°C)	Storage Temperature (°C)	Packaging Size L x W x H (mm)
				UPC ≥	APC ≥					
1×2	1260 ~ 1650	4.2	0.8	50	55	0.2	55	-40 ~ 85	-40 ~ 85	19'1U: 483 x 194 x 43 19'2U: 483 x 194 x 86
1×4		7.6	0.8	50	55	0.2	55			
1×8		10.7	0.8	50	55	0.3	55			
1×16		14	1	50	55	0.3	55			
1×32		17.2	1.5	50	55	0.3	55			
1×64		20.6	2	50	55	0.4	55			
1×128		24	2.5	50	55	0.5	55			
2×2		4.6	1	50	55	0.2	55			
2×4		8	1	50	55	0.2	55			
2×8		11	1	50	55	0.4	55			
2×16		14.6	1.2	50	55	0.4	55			
2×32		17.8	1.7	50	55	0.4	55			
2×64		21	2.2	50	55	0.5	55			
2×128		24.5	2.7	50	55	0.6	55			



Add: Building 11, Huichuang Industrial Park,238 Jinhan Road,
Langxia Street,Yuyao, Zhejiang Province,CHINA

Tel: +86 574 6260 2751

For sales inquiries, please email Lance <lance@fibermint.com>

For technical queries, please email Gary <gary@fibermint.com>