

FDB-16Q1-16A

16-Core Fiber Distribution Box

Application

- Designed for FTTx deployments, enabling efficient splicing, splitting, and patching in fiber optic networks.
- Rated IP65 for reliable performance in both indoor and outdoor installations, with flexible wall or pole mounting options.



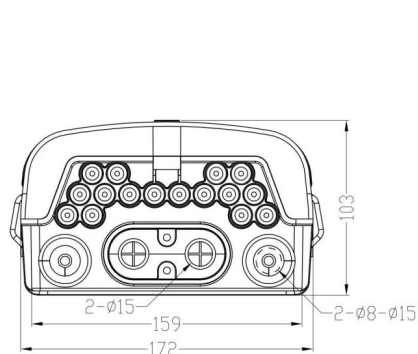
Features & Benefits

- Constructed from high-quality engineering plastic for enhanced durability and weather resistance.
- Supports one splice tray with a capacity of 16 fibers for streamlined fiber management.
- Equipped with an adapter frame supporting up to 16 SC adapters for versatile connectivity.
- Features a mid-span port to accommodate loop-through cable configurations.
- Easy-to-install design suitable for both wall-mounted and pole-mounted applications.
- Provides robust mechanical protection for fiber optic components in harsh environments.
- Compact design optimizes space while maintaining high functionality.

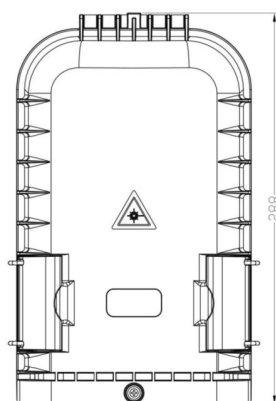
Specifications

| Part No. | FDB-16Q1-16A |
|--------------------|---------------------------------|
| Dimensions | 288×172×103 mm |
| Enclosure Material | PC+ABS |
| Cable Entry Ports | 2 Mid-span ports × Ø15mm |
| Branches | 2 × PG13.5 |
| Cable Exit Ports | 16 Drop ports × Ø2-4.6mm |
| Patching Capacity | 16 SC Adapters |
| Splicing Capacity | 12/24 Fibers (Single-core) |
| Splice Tray | 2 Trays |
| Suitable Splitter | 1×8 or 1×16 Micro PLC Splitters |
| Material of Tray | ABS |
| IP Rating | IP65 |
| Mounting | Wall / Pole Mount |

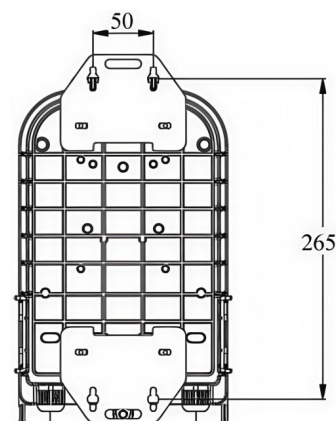
Dimension Drawing



Ports and Width/Height Dimensions

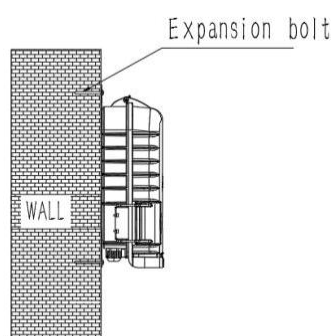


Top View

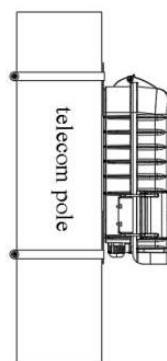


Metal Plate Installation Positions
and Dimensions

Wall-mounted & Pole-mounted







Wall Mount



Pole Mount

Accessories

| Picture | Name | Size | Quantity |
|---|--|---------------|----------------|
|  | Wall-mounting Kit (for Wall mount Only) | / | 4 Pairs |
|  | Pole-mounting Kit (for Pole mount Only) | Clamp: Ø216mm | 2 PCS |
|  | Metal Plate | / | 2 PCS |
|  | Nylon Cable Tie | 3×100mm | 10 PCS |
|  | Splice Sleeve | 1.2/45mm | 12-24 PCS/Tray |
|  | Hose Clamp | / | 4 PCS |
|  | PG Gland | PG13.5 | 2 PCS |
|  | Key | / | 1 PC |
|  | Installation Menu | / | 1 PC |

Packing List

| Part No. | Carton Size | PCS/CTN | G.W. |
|--------------|-------------|---------|--------|
| FDB-16Q1-16A | 62×41×35 CM | 10 | 13 KGS |