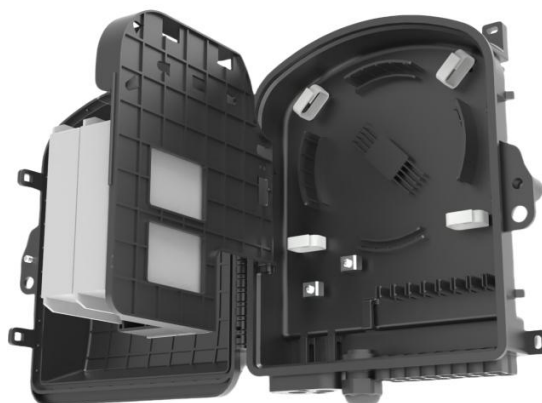


FDB-16JS

16-Core Fiber Distribution Box

Application

- Serves as a specialized termination and distribution hub in FTTx networks, enabling connections between feeder cables and drop cables, while supporting fiber splicing and integration of insertion module PLC splitters.
- IP65-rated for dust and water resistance, designed for wall-mounted installations in outdoor or harsh indoor environments, providing reliable protection for FTTH, telecom, CATV, and data communication networks.



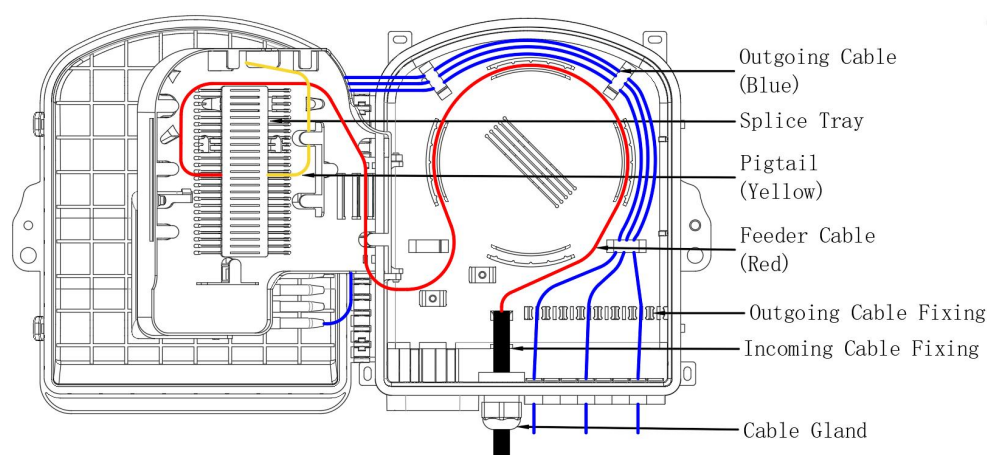
Features & Benefits

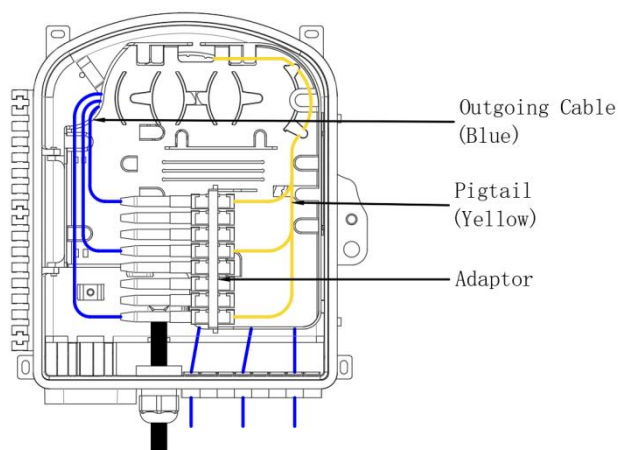
- Constructed from PC+ABS material with anti-UV properties, ensuring long-term performance against sunlight and environmental degradation in outdoor settings.
- Equipped with 2 slots for insertion module PLC splitters, supporting configurations of 2×1:8 splitters or 1×1:16 splitter to meet diverse signal distribution needs.
- Supports 8-core splicing, compatible with cord cables, patch cords, and drop fibers for flexible routing in medium-scale FTTx deployments.
- Maintains a fiber bend radius of over 30mm to prevent signal loss and ensure optical integrity during installation and operation.
- Designed for quick access to internal components, simplifying splitter replacement, splicing maintenance, and future capacity upgrades.

Specifications

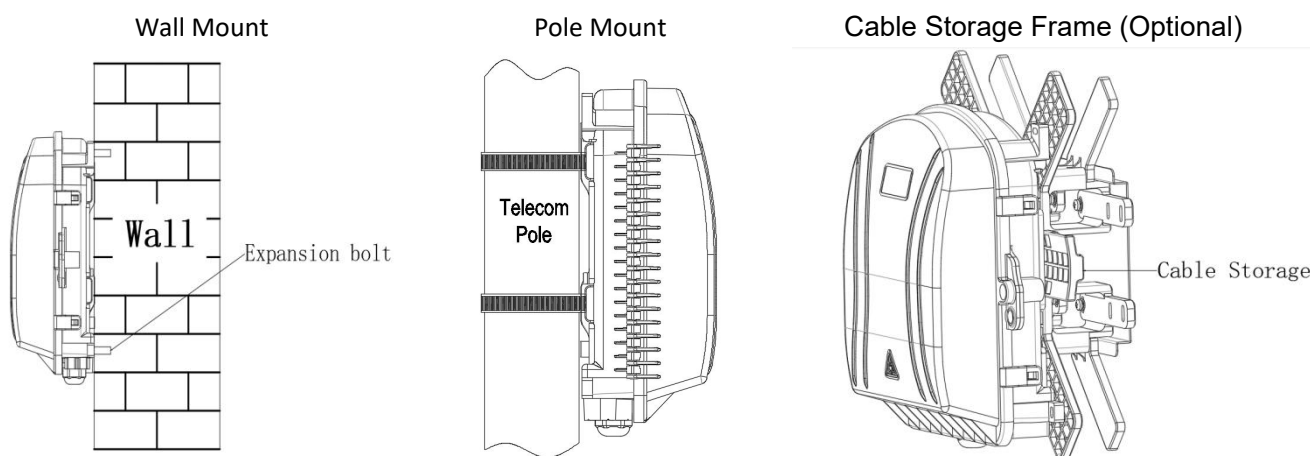
Part No.	FDB-16JS
Dimensions	253×198×100 mm
Material	PC+ABS
Main Cable Ports	2 Mid-span ports × Ø8-13mm (for Un-cut cable)
Branches	1 × PG13.5
Drop Cable Ports	16 × Ø3mm
Patching Capacity	16 SC Adapters
Splicing Capacity	8 Fibers (Single-core)
Splice tray	1 Tray
Suitable Splitter	1×16 Cassette PLC Splitter
IP Rating	IP65
Mounting	Wall / Pole Mount

Routing








Mounting Options



Accessories

Picture	Name	Size	Quantity
	Wall-mounting Kit (for Wall mount Only)	/	4 Pairs
	Pole-mounting Kit (for Pole mount Only)	Clamp: Ø216mm	2 Pairs
	Spirally Wound Tube	L=50mm	1 PC
	Nylon Cable Tie	3×100mm	8 PCS
	Splice Sleeve	1.2/45mm	8 PCS
	Key	/	1 PC
	Cable Storage Frame	/	(Optional)



Packing List

Part No.	Carton Size	PCS/CTN	G.W.
FDB-16JS	44×59×53CM	20	25KG