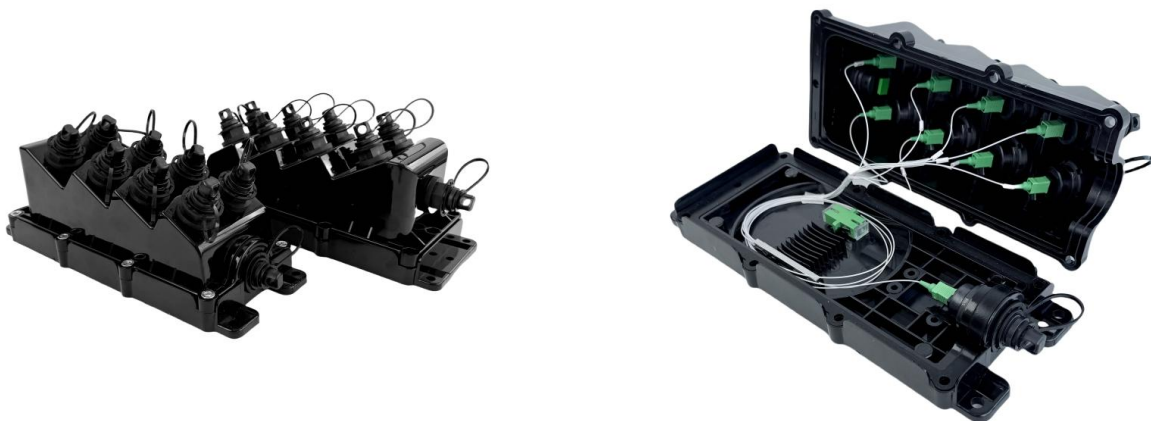


# FAT-C9PA

## 9-Core Fiber Access Terminal Box

### Application

- Engineered for FTTx networks, facilitating connections between network access and drop cables at user endpoints.
- IP68-rated enclosure supports reliable operation in diverse environments, including aerial, wall, pole, duct, or manhole installations.



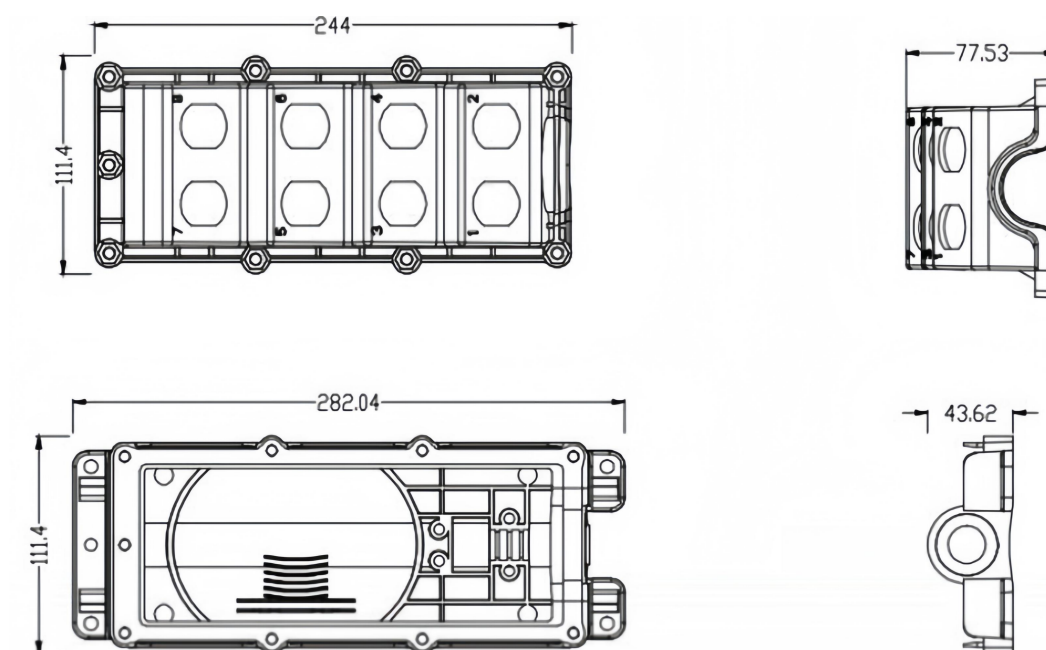
## Features & Benefits

- Features 8+1 ports with factory-terminated OptiTap hardened connectors (SC, MPO, or LC duplex) for quick, tool-free deployments.
- Supports 4 or 8 fiber splices and a 1x8 or 1x9 micro PLC splitter for efficient fiber routing and management.
- Compact design ensures organized splicing, splitting, and termination in space-constrained setups.
- Versatile mounting bracket accommodates aerial, wall, pole, duct, or manhole configurations for flexible installations.
- Robust IP68 protection guarantees long-term reliability in challenging deployment scenarios.

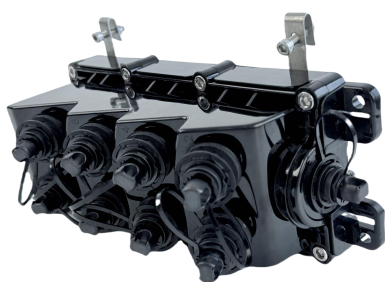
## Specifications

Part No.	FAT-C9PA
Dimensions	282×111×77.5 mm
Enclosure Material	PC+ABS
Cable Entry Ports	1 Port × PG13.5 or Hardened Connectors
Cable Exit Ports	9 Ports × Hardened Connectors
Patching Capacity	9 SC or LC Duplex Adapters
Splicing Capacity	8/16 Fibers (Single-core)
Suitable Splitter	1×8 or 1×9 Micro PLC Splitters
IP Rating	IP68
Mounting	Aerial / Wall / Pole Mount / Duct / Manhole

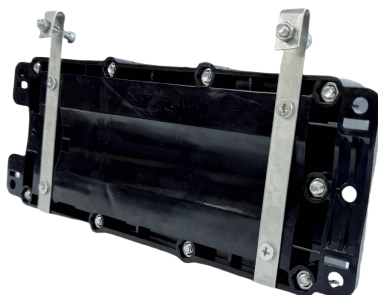
## Accessories



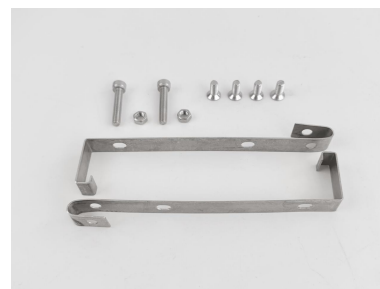
## Mounting Options: Aerial



Front View



Back View



Aerial Kit

## Mounting Options: Pole Mount



Side View



Pole-mounting Kit

## Accessories

Picture	Name	Size	Quantity
	Wall-mounting Kit (for Wall mount Only)	/	4 Pairs
	Pole-mounting Kit (for Pole mount Only)	Clamp: Ø216mm	2 PCS
	Aerial Kit (for Aerial mount Only)	/	2 Pairs
	Splice Sleeve	1.2/45mm	8 PCS

## Packing List

Part No.	Carton Size	PCS/CTN	G.W.
FAT-C9PA	50×42×27 CM	20	17 KGS